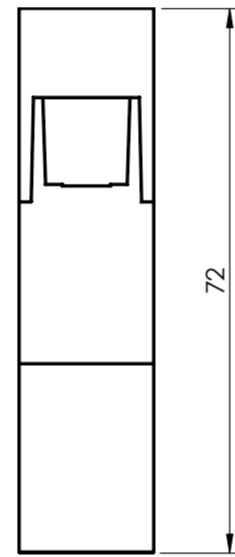
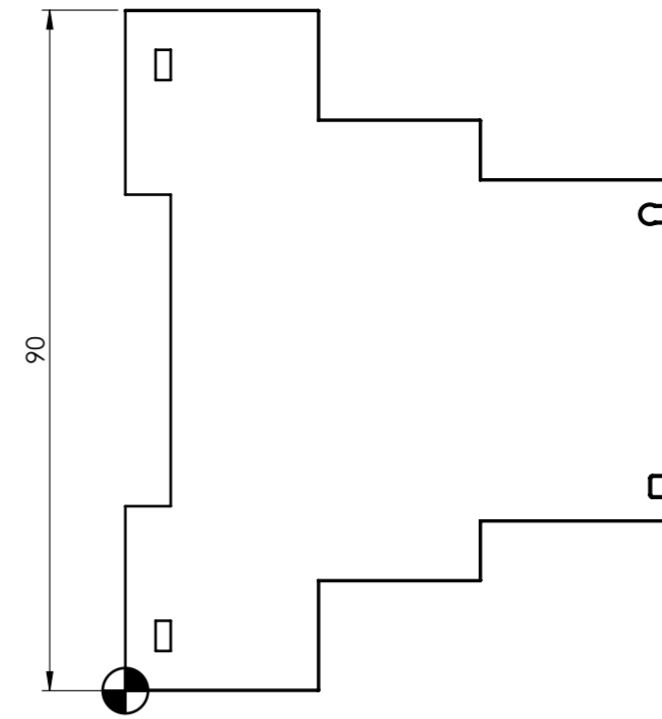
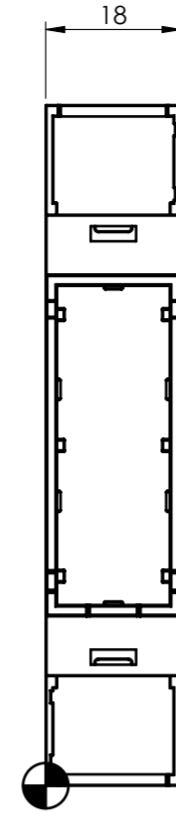
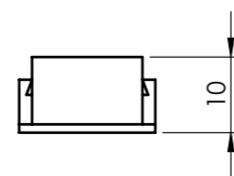
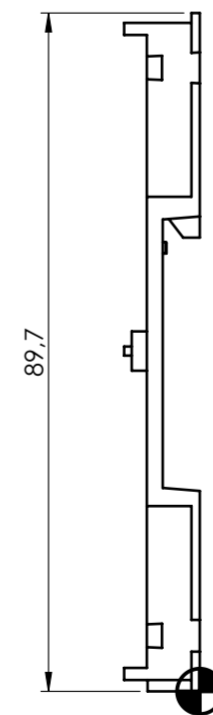
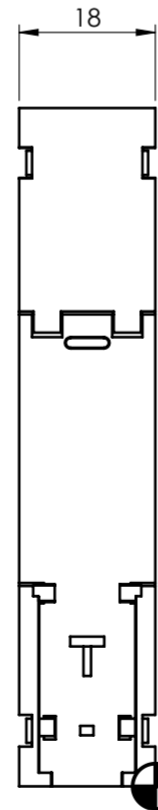


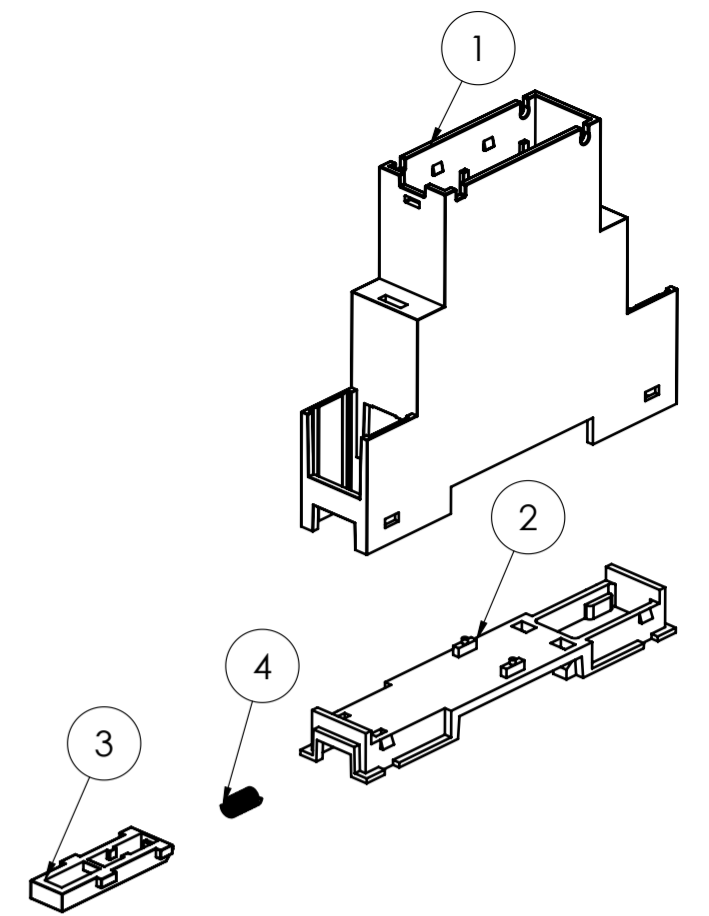
### BODY ENCLOSURE



### BASE

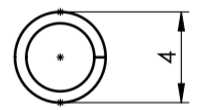
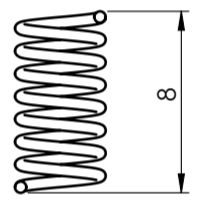


General information:  
 - Workpiece zero point for mechanical processing  
 - Minimum recommended radius for machining = R1.0 mm  
 - Mounting rail like EN 60715: TH 35-7.5 or TH 35-15  
 - Recommended PCB outline on [www.italtronic.com](http://www.italtronic.com)

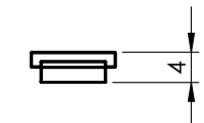
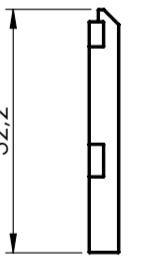
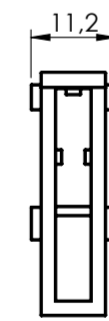


### SPRING

3:1



### HOOK



RIF.	Q.TY	DRAWING	DESCRIPTION
1	1	2_250_00106	BODY ENC. MODULBOX ONE 1MH68
2	1	2_250_00101	BASE MODULBOX ONE 1M
3	1	2_250_03817	HOOK MODULBOX 1M
4	1	2_250_03820	SPRING

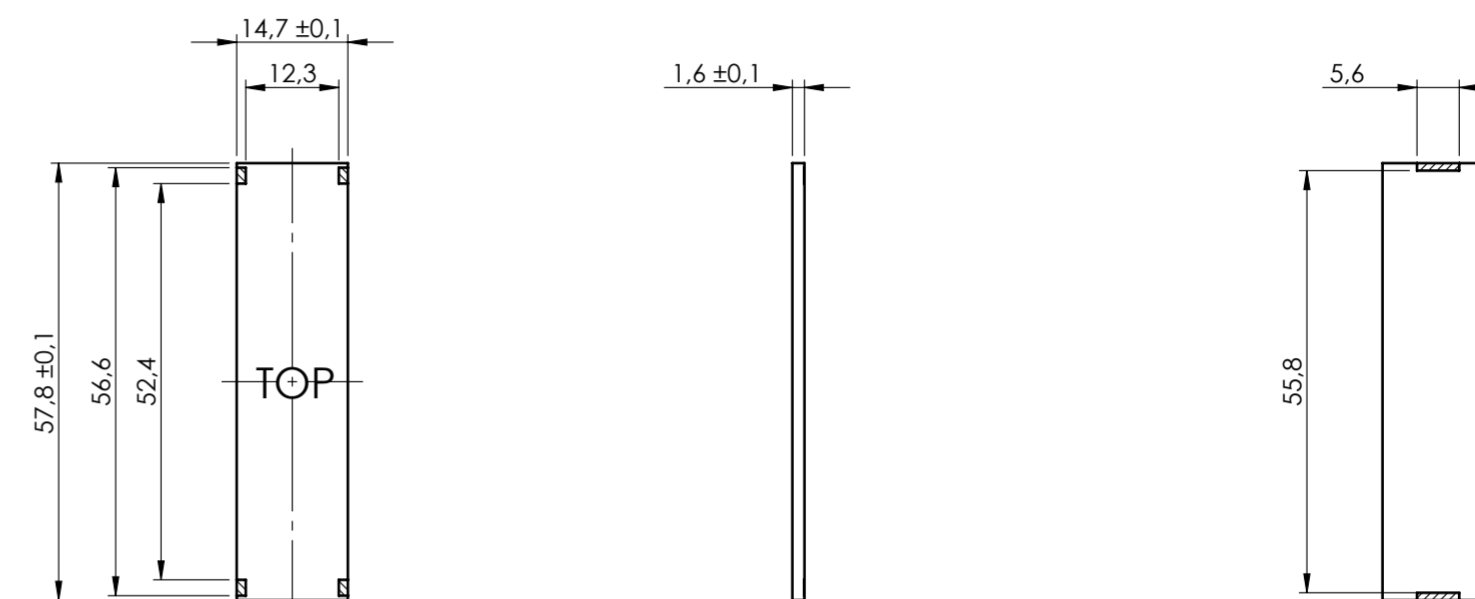
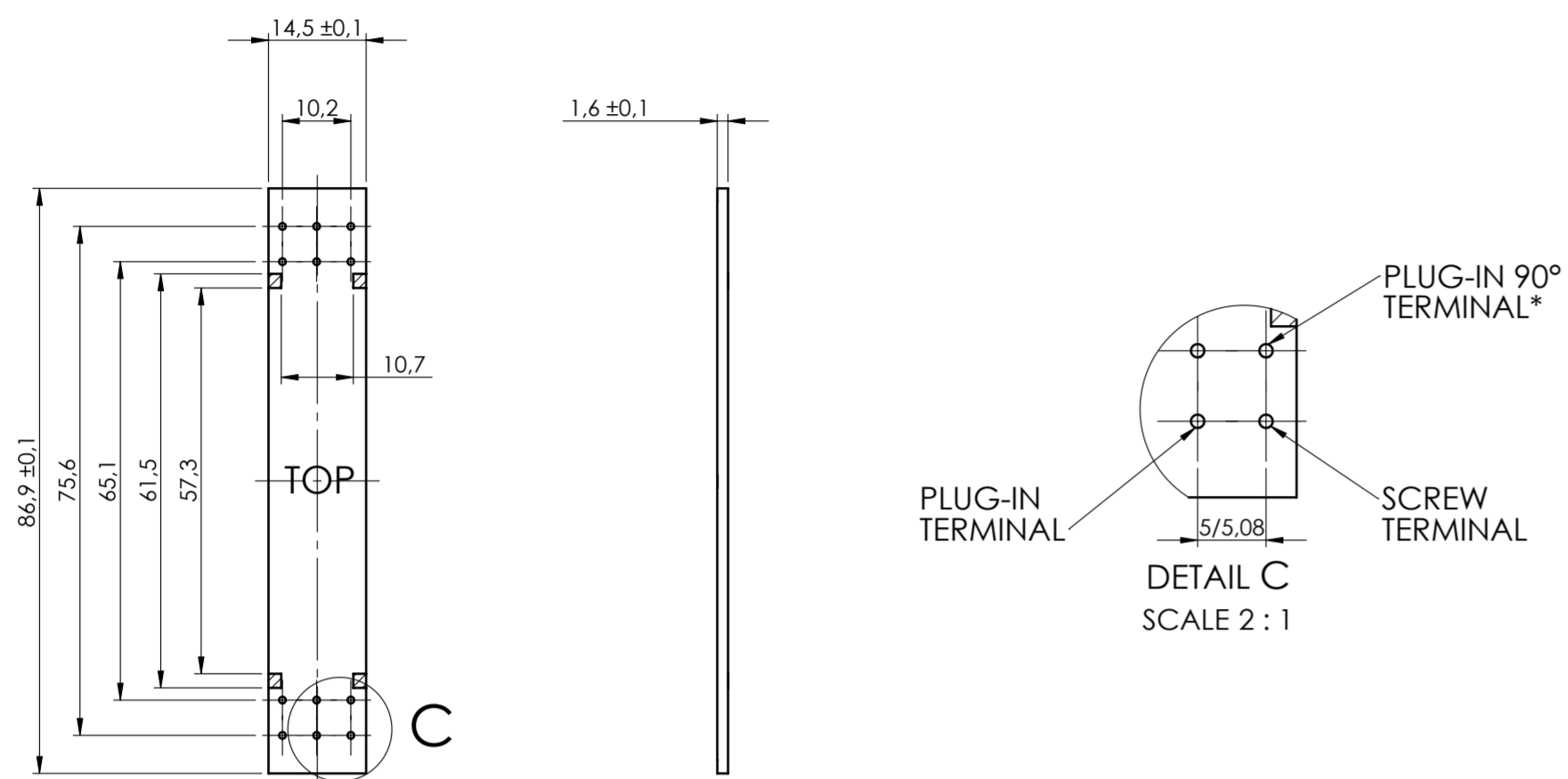
General Tolerance UNI EN 22768/1 Media (m)					Sheet:
from 0.5 to 3 ± 0.1	from 3 to 6 ± 0.1	from 6 to 30 ± 0.2	from 30 to 120 ± 0.3	from 120 to 400 ± 0.5	1
Scale:	Drawn:	Checked:	Date:	Material:	Process:
1:1	M.S.	R.N.	22/08/2023		
Dimension in mm	Derived from:	Weight:	Cod. Mold:		
	--	gr	--		

		Description: KIT CONTENITORE MODULBOX 1MH68 KIT ENCLOSURE MODULBOX 1MH68		Rev.:	
<a href="http://italtronic.com">italtronic.com</a>		Drawing nr.: <b>3_250_00178</b>		00	A2

PCB A

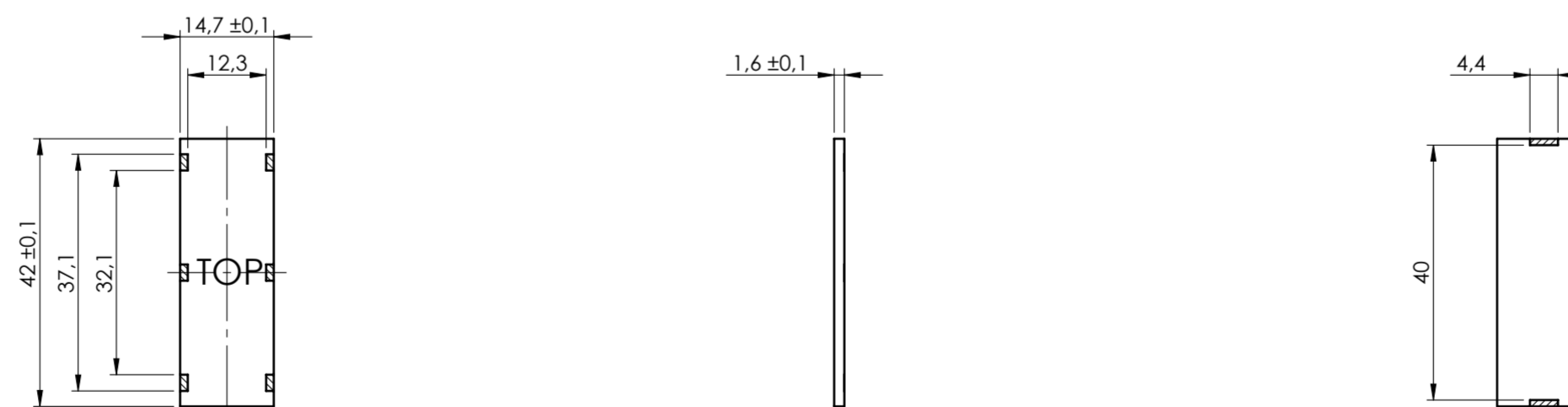
PCB B

Max height of the terminal:  
Modulbox ONE: 20 mm



\*To use the PLUG-IN terminals in Modulbox ONE use plug-in adapter P05000003E (5/5.08 pitch) and P05000004E (7.5/7.62 pitch)

PCB C



General Tolerance UNI EN 22768/1 Media (m)					Sheet:
from 0.5 to 3 ± 0.1	from 3 to 6 ± 0.1	from 6 to 30 ± 0.2	from 30 to 120 ± 0.3	from 120 to 400 ± 0.5	PCB
Scale:	Drawn:	Checked:	Date:	Material:	Process:
1:1	M.S.	R.N.	22/08/2023		
Dimension in mm	Derived from:		Weight:	Cod. Mold:	
	--		gr	--	
 enclosures for electronics italtronic.com			Description: KIT CONTENITORE MODULBOX 1MH68 KIT ENCLOSURE MODULBOX 1MH68 Drawing nr.: <b>3_250_00178</b>		
				Rev.:	A2
				00	

NO COMPONENTS AREA